



RESOLUTION 2011-852

A RESOLUTION OF THE MAYOR AND COMMON COUNCIL OF THE TOWN OF CAMP VERDE, YAVAPAI COUNTY, ARIZONA, URGING THE ARIZONA INDEPENDENT REDISTRICTING COMMISSION TO KEEP RURAL ARIZONA TOGETHER BY CONSIDERING AND ADOPTING THE PROPOSED DISTRICT MAPS AS PROVIDED.

WHEREAS, a national census is taken once ever ten years in order to re-determine the nation's current population and that of the several states; and

WHEREAS, based on the new census data a statewide redistricting to reapportion population is enacted as required by the Arizona and United States Constitutions; and

WHEREAS, understanding that the Arizona Independent Redistricting Commission is Charged with beginning with a "Clean Slate"; and

WHEREAS, this Charge notwithstanding, it is in the interest of eastern rural counties and communities to remain united in political representation; and

WHEREAS, those interests being fundamentally different in nature, economically, culturally, historically, and in policy concerns, than that of metropolitan regions and counties;

NOW THEREFORE, BE IT RESOLVED, THAT THE MAYOR AND COUNCIL OF THE TOWN OF CAMP VERDE, YAVAPAI COUNTY, ARIZONA JOIN THE OTHER CITIZENS AND GOVERNMENTS OF EASTERN RURAL ARIZONA IN URGING THE COMMISSION TO KEEP THE LEGISLATIVE AND CONGRESSIONAL REPRESENTATION OF THIS REGION SOLELY RURAL AND UNDIVIDED. WE DO ENDORSE AND OFFER THE ATTACHED DISTRICT PROPOSALS FOR THE EASTERN RURAL REGION LEGISLATIVE DISTRICT AND CONGRESSIONAL DISTRICT FOR CONSIDERATION AND ADOPTION BY THE COMMISSION.

PASSED AND APPROVED by majority vote of the Mayor and Common Council at the Regular Session of October 26, 2011.

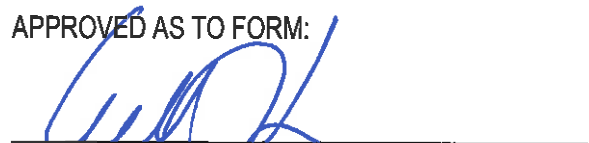
  
\_\_\_\_\_  
Mayor Bob Burnside

10-27-11  
\_\_\_\_\_  
Date

ATTEST:

  
\_\_\_\_\_  
Deborah Barber, Town Clerk/Date

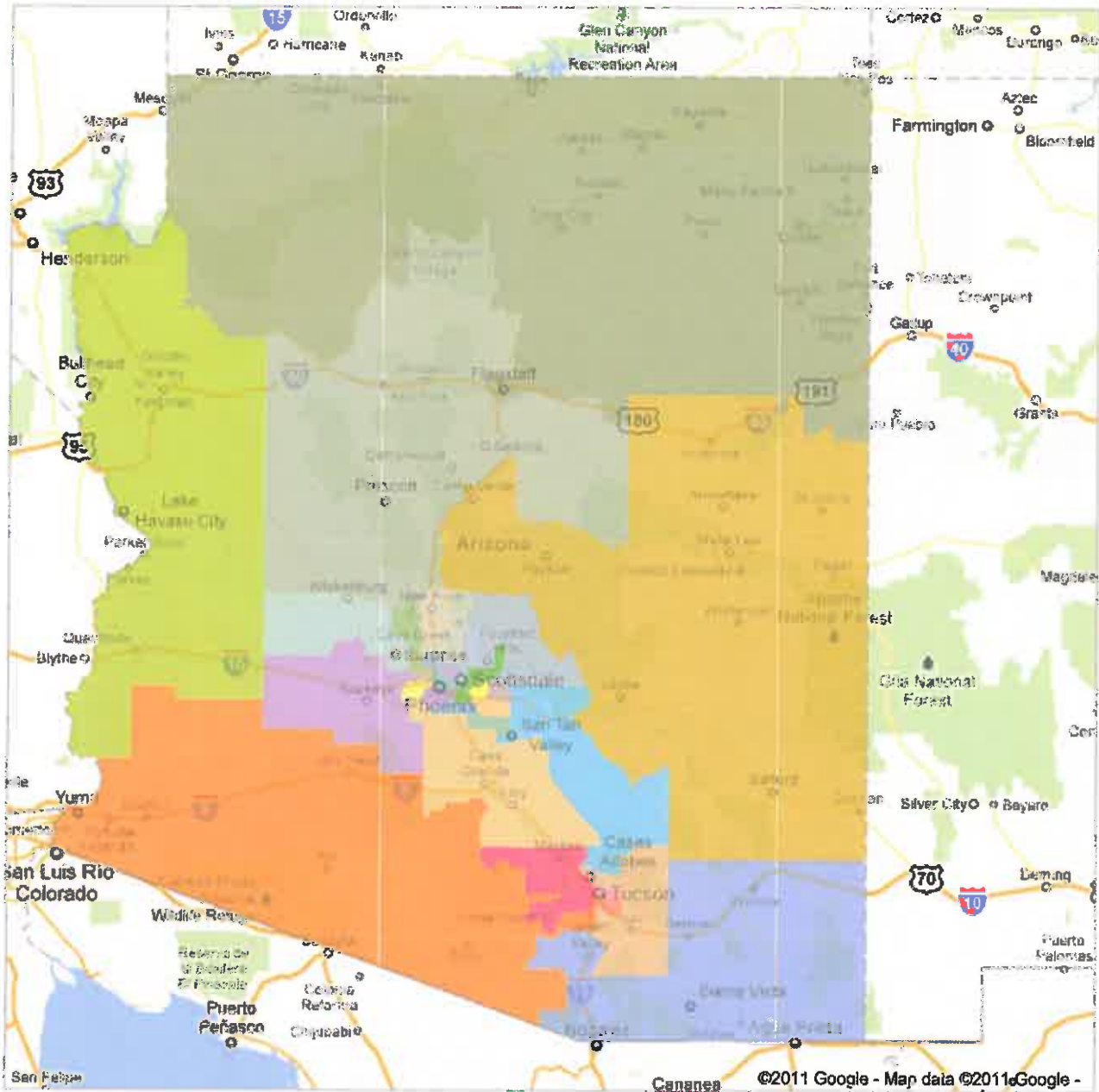
APPROVED AS TO FORM:

  
\_\_\_\_\_  
William J. Sims, Town Attorney/Date

MAP D  
Google

ALT PROPOSED  
TO SUPPORT BY LD 5 +

Get Google Maps on your phone  
text the word "GMAP" to 466453



Displaying content from [www.azredistricting.org](http://www.azredistricting.org)

The content displayed below and overlaid onto this map is provided by a third party, and Google is not responsible for it. Information you enter below may become available to the third party.

Block-Block Group-Tract-County (Template)

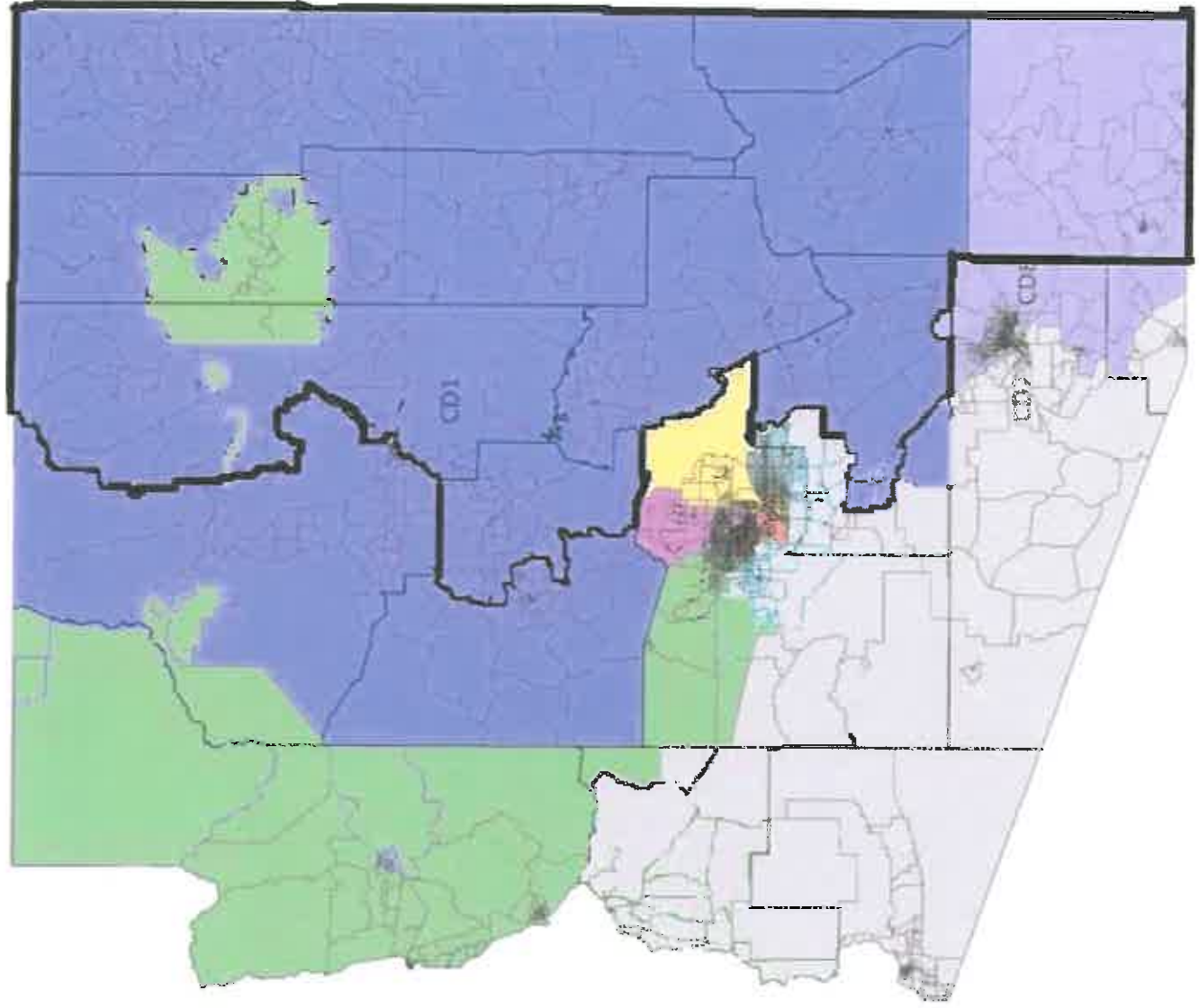
Leg-9\_minority\_dist-option1-ver

STATE  
LEGISLATIVE  
DIST

MAP B

Alt Puroseo By LD5+

# Proposed Eastern Rural Congressional District



Colored areas represent current congressional boundaries:

- Blue covers CD-1
- Green covers CD-2
- Purple covers CD-8
- heavy black line represents proposed congressional boundaries