



**AGENDA
TOWN OF CAMP VERDE
WORK SESSION
MAYOR AND COUNCIL
130 BLACK BRIDGE ROAD, CAMP VERDE, AZ 86322
FRIDAY, MARCH 20, 2020 AT 9:00 A.M.**

Note: Council member(s) may attend Council Sessions either in person or by telephone, video, or internet conferencing.

- 1. Call to Order**
- 2. Roll Call.** Council Members Buck Buchanan, Joe Butner, Bill LeBeau, Jessie Murdock, Robin Whatley; Vice Mayor Dee Jenkins; and Mayor Charles German.
- 3. Pledge of Allegiance**
- 4. Multi-Agency Discussion and Update from the Copper Canyon Fire District Associated with Emergency Fire Services within Jurisdictional Boundaries**
- 5. Adjournment**

CERTIFICATION OF POSTING OF NOTICE


The undersigned hereby certifies that a copy of the foregoing notice was duly posted at the Town of Camp Verde and Bashes on 03-11-2020 at 3:00 p.m.

C. Pemberton

Cindy Pemberton, Town Clerk


Pursuant to A.R.S. §38-431.03. (A)(1); (A)(2) and (A)(A3), the Council may hold an Executive Session for purposes of consultation for legal advice with the Town Attorney on any matter listed on the agenda, or discussion of records exempt by law from public inspection associated with an agenda item.

Pursuant to A.R.S. §38-431.01 Meetings shall be open to the public - All meetings of any public body shall be public meetings and all persons so desiring shall be permitted to attend and listen to the deliberations and proceedings. All legal action of public bodies shall occur during a public meeting. The Town of Camp Verde Council Chambers is accessible to the handicapped. Those with special accessibility or accommodation needs, such as large typeface print, may request these at the Office of the Town Clerk at 928-554-0021




FUTURE CCFMD CAPITAL PROJECTS AND FUNDING OPTIONS

A discussion to consider the future capital needs of the District and how to manage our ability to pay for them all over time




Identified Needs

- From our 2018-2023 Strategic Plan, we identified the need to build, equip, and staff an additional fire station in the Camp Verde area.
- In pursuit of this goal, it became evident that while a new fire station would improve service delivery, it would not solve all of the service delivery challenges we have in the district. Additionally, we have a pressing need to relocate or renovate our present administrative office, which is in poor condition and not a healthy environment for staff to work out of.
- New fire stations also require additional fleet and equipment, and these needs have to also be considered as part of our expansion plan.




Current Actions and Thoughts


- We are well underway with our efforts to "break ground" on the Cherry Creek Fire Station sometime this spring.
- We have purchased the Howards Road parcel as a future fire station site to eventually better serve that side of the District. (Quarterhorse/McCracken/Sierra Verde/Verde Lakes).
- We have ordered two new fire engines, and a new chassis for a Type 6 Engine.
- We are in the process of working on specifications for a new water tender, an ATV for wildfire medical team deployments, and possibly a Type 3 fire engine, also for wildfire deployments.
- We recently had two ambulances remounted/refurbished to replenish the ambulance fleet.
- We were not successful with our SAFER grant for additional staffing for the new station, which will strain our budget a bit. We will try again when SAFER opens again (soon).

Current Capital Funding Strategies 

- Cherry Creek real estate was paid for with capital reserve funds.
- Howards Road is being financed (rate was too good to pass up) in order to preserve capital reserve balance for new station needs.
- Cherry Creek architect fees are being paid out of capital reserves.
- Cherry Creek station construction is programmed to be financed via lease purchase (and possibly some capital reserve funds).
- New fire engines are being financed with lease purchase.
- Proposed new water tender partially funded with Eddie Lodge Estate funds, with the balance out of capital reserve or a lease purchase (est. \$225k).
- Recent ambulance remounts were financed via lease purchase agreements.

A Review of Funding Sources 

- Property Taxes- There is limited opportunity for large levy increases as we are at the statutory cap and the only new money we receive is through increased valuations or new construction (vacant land converted to developed) for existing parcels. Fortunately we are seeing appreciation increases, and new development, but these values are probably not enough to support the capitalization of larger projects (although they may support "lease payments"). **We do have a unique opportunity to pursue the annexation of new additional parcels (Cherry Creek and beyond, and Middle Verde) to our tax roles. We will pursue these annexations aggressively when we get the corresponding stations (Cherry Creek/Arena del Loma) under construction.**
- Grants- We have had some luck with "smaller grants", which help to fund critical capital needs, but the receipt of grants is always "iffy". FEMA (AFG) grants for vehicles are very difficult to get. This grants suits itself better for turnouts, radios, and air-pack replacements, or similar dollar amounts. We will submit again for a SAFER grant, but these too are very hard to receive (competitive). There are really no grants for fire station construction as we do not qualify for Community Development Block Grants. We will continue to pursue as many grant opportunities as we can for funding for any needs that fit the grant guidance applied for.

A Review of Funding Sources 

- Wildland- The "out-of-district" arena can be an effective source of additional revenue for our budget, but it requires some capitalization (trucks/equipment) and it requires a willingness of our crews to commit to "go" when called upon by the State/Feds. When we go, if this revenue stream covers the basic expenses, and the capitalization of the larger expenses (lease purchases) plus some additional funds to help support the capital budget, it is still worth pursuing. The risk, of course, is whether we will actually get called out if it is an inactive fire season.
- Ambulance Billing- Our second largest revenue source secondary to property taxes, this is generally a very stable and predictable source, but it is subject to variances in call volume and availability of ambulances (we only get paid when we transport).
- Non-Resident Billing- This is another small revenue stream that we have that helps us to recover costs associated with responding to freeway accidents or other incidents beyond our current boundaries. This category promises limited opportunities for growth, especially if we annex some parcels into the district.

A Review of Funding Sources



- IGA Revenue- This category is our third largest revenue stream, primarily because of our agreements with the YAN and the Casino for service delivery (we are currently reviewing the properties owned by the tribe to ensure that we have accounted for all the parcels we are entitled to assess a fee for). We generally apply the increase of the AV to these contract fees, so they increase incrementally, like our tax revenue, plus new growth. Shared Services is also included under this category, such as our shared Reserve FF program with VVFD, but this is usually just a partial cost recovery, rather than genuine new revenue. Wildland Revenue is budgeted in this category too, but it was addressed previously due to its unique nature.
- Lease Revenue- We currently receive a small rental stream from the dental office in Camp Verde, with limited opportunity to improve this option as we do not have other buildings to lease out.

Potential New Revenue Sources




- Telecommunication Sites- With our expansion to other fire station locations, and the Rimrock site, we have a unique opportunity to explore building cell towers to solicit cell providers to lease space to be "on our towers". In reality, this could bring in some net revenue but the cost of the tower erection would likely be born by us, so any rents might have to cover the cost to finance the tower, or would be used to replenish capital funds expended for this purpose.
- Subscription for Service Delivery- We could pursue establishing a program for subscription service for those parcels outside of the current boundaries. While this might bring in new revenue, there would be a large labor burden in setting up the program and maintaining the billing going forward. Plus, it might discourage some folks from annexing into the district unless the fee could be set higher than the property taxes they would potentially get from a given parcel. **The better option might be to simply pursue an annexation drive, or a blanket annexation of these areas.**
- Creation of Fleet Maintenance Division- With our fleet repairs ever increasing, it may be worthwhile to explore creating a fleet service/repair division. This might reduce our costs by lowering our labor rates for fleet service and repair, but also create the opportunity to operate an enterprise that might repair other emergency fleets in the region, creating a net income for the district. This might become a new strategic goal within our soon to be revised strategic plan.
- New Lease-Purchase Agreements- Obviously we have, or will be adding quite a bit of new debt to our balance sheet. There is clearly a limit as to how many new payments we can take on without impacting payroll and other budgetary expenditures.

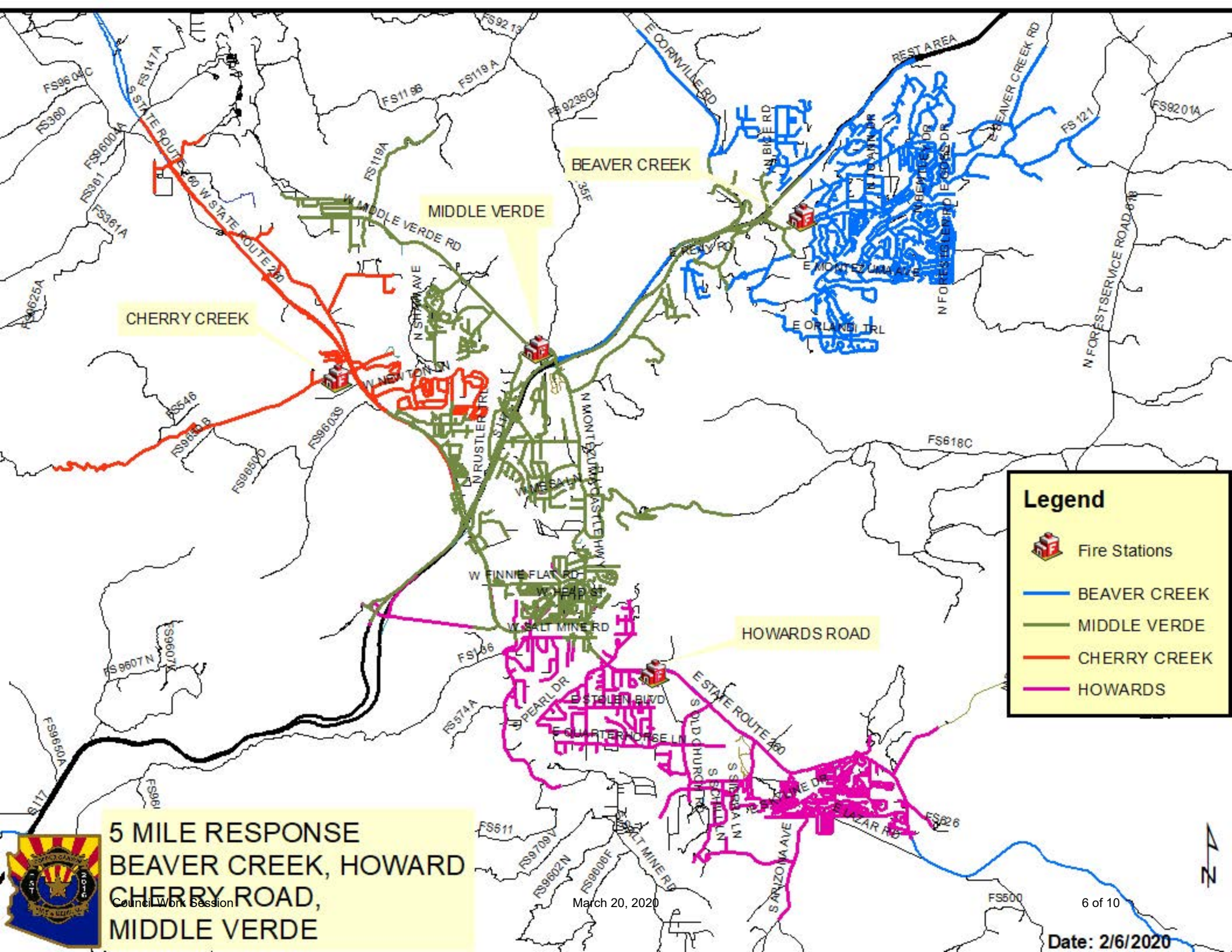
Other Cost Avoidance Ideas








- Merger-Consolidation-JPAs-Shared Services- As we have already proven, bringing two entities together can reduce costs and improve efficiencies. This of course comes with a whole host of other political and social issues, and these have to be weighed against the potential savings to be gained. With ever increasing costs of pensions, insurance premiums, wages, fuel, etc., getting "leaner" should not be readily dismissed, but it takes "two to tango"...
- Bonding- While a general obligation bond is not really cost avoidance, as the taxpayer is still paying for it, it does provide the opportunity to move some of our station or apparatus purchases "off budget" which frees up this budget capacity to either lower the "mill rate" or to pursue other budgetary needs (staffing?). As discussed, we need to seriously consider a bond, and whether it would be successful. The only way of knowing this is to commit to a bond committee, who we would educate about our needs and financial limitations, and in turn, who would help "sell it" to the community. If this feedback is positive, then we would "call for the election" and continue to provide the information to the public (pamphlets) to help support the election (within the limits of the law).

Discussion/Comments/Questions? 

If determination is to pursue Bond, Call for Election would be May/June.
Pro Statements by early August
Early Ballots, October 7th
Election November 3rd



Legend

-  Fire Stations
-  BEAVER CREEK
-  MIDDLE VERDE
-  CHERRY CREEK
-  HOWARDS

5 MILE RESPONSE
BEAVER CREEK, HOWARD
CHERRY ROAD,
MIDDLE VERDE



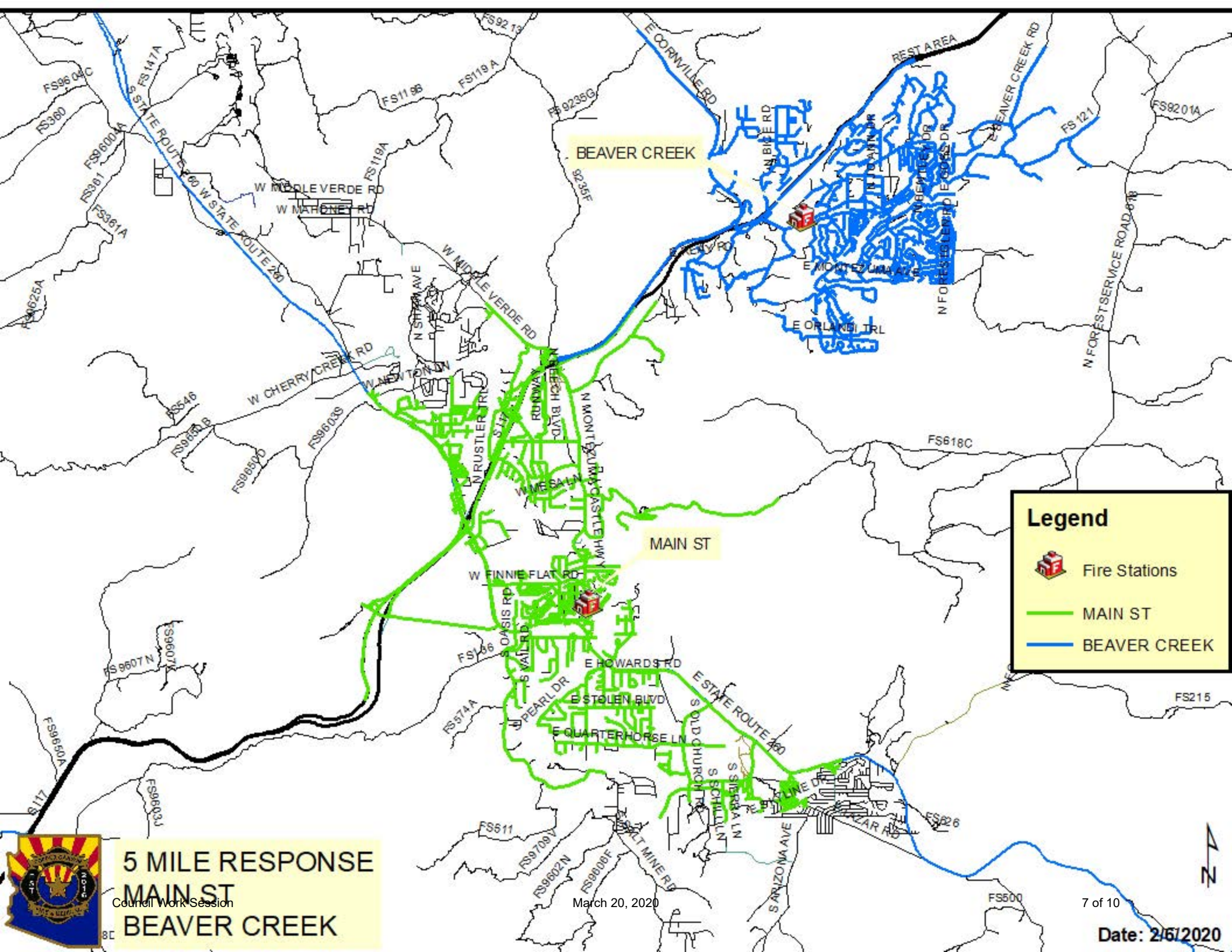
Council Work Session

March 20, 2020




6 of 10

Date: 2/6/2020





Legend

-  Fire Stations
-  MAIN ST
-  BEAVER CREEK



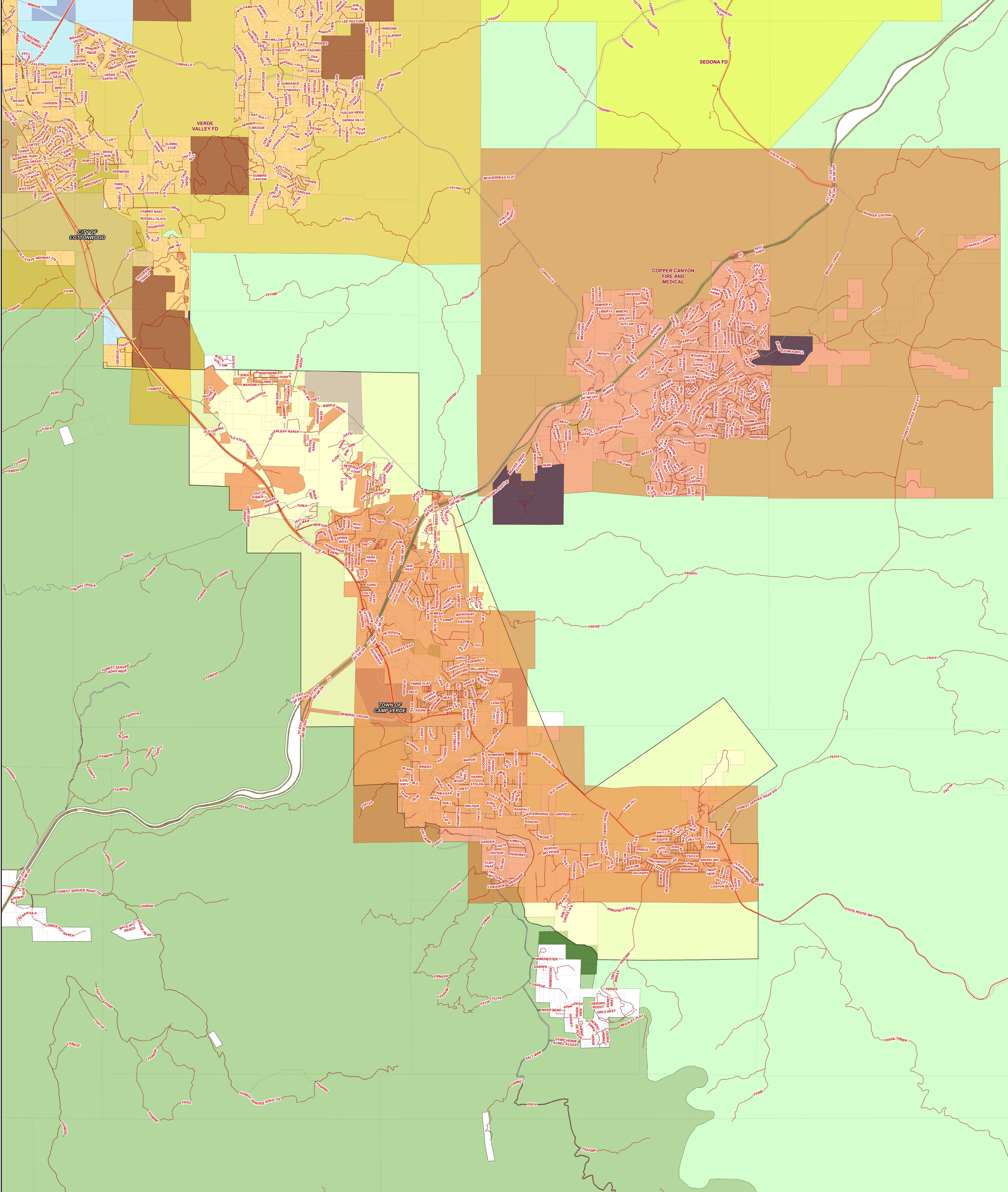
**5 MILE RESPONSE
MAIN ST
BEAVER CREEK**

Council Work Session

March 20, 2020

7 of 10

Date: 2/6/2020

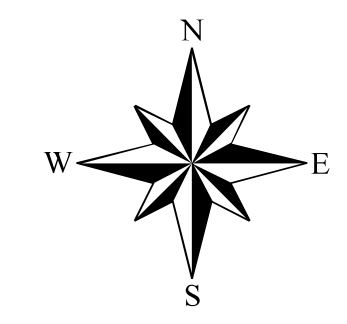


Copper Canyon Fire and Medical District



Yavapai County assumes no responsibility for errors, omissions, and/or inaccuracies in this mapping product. This product is for informational purposes and may not have been prepared for, or be suitable for, legal, engineering, or surveying purposes. Users of this information should review or consult the primary data and information sources to ascertain the usability of the information.

Date Saved: 11/20/2019 3:31:41 PM



1 in = 0.5 miles

Fire Districts		City Boundaries		Public Land Use		Major Roads	
Verde Valley FD	City of Cottonwood	Arizona Game and Fish	Interstate Highways	Arizona State Parks	State Highways	Old Highways	
Sedona FD	Town of Camp Verde	Coconino National Forest		Indian Reservation Land			
Copper Canyon Fire and Medical		National Monument		Prescott National Forest			
		State of Arizona Land					

**TOWN OF CAMP VERDE
RESOLUTION NO. _____**

A RESOLUTION OF THE MAYOR AND COUNCIL OF THE TOWN OF CAMP VERDE, ARIZONA, DESIGNATING THE COPPER CANYON FIRE AND MEDICAL DISTRICT AS THE FIRE SERVICE AGENCY FOR THE TOWN OF CAMP VERDE; DIRECTING THAT ANY ANNEXED PROPERTY OF THE TOWN OF CAMP VERDE ALSO BE INCLUDED WITHIN THE JURISDICTIONAL BOUNDARIES OF THE COPPER CANYON FIRE AND MEDICAL DISTRICT; AND DIRECTING THAT THE TOWN MANAGER AND STAFF BE AUTHORIZED TO TAKE ALL ACTION NECESSARY TO IMPLEMENT THE SAME

RECITAL:

WHEREAS, A.R.S. § 48-262(M) permits the Town of Camp Verde (“Town”) to designate a service agency for purposes of providing emergency fire services within its jurisdictional boundaries; and

WHEREAS, the Town is serviced by the Copper Canyon Fire and Medical District (“District”) in conjunction with its fire and emergency medical service needs and wishes to formally name said District as its fire service agency for the Town, and wishes to include any property annexed into the Town within the jurisdictional boundaries of the District as well, but not to include any properties already located within the jurisdictional boundaries of another fire district; and

WHEREAS, the Town Council has determined that formally naming the Copper Canyon Fire and Medical District as its service agency and including any newly annexed property of the Town in the jurisdictional boundaries of the District will benefit both the Town and the District.

ENACTMENT:

NOW, THEREFORE, BE IT RESOLVED that the Mayor and Council of the Town of Camp Verde, Arizona, do hereby name Copper Canyon Fire and Medical District as its fire service agency for the Town, and all properties currently located within the jurisdictional boundaries of the Town, except as to those already being serviced by an existing fire district, and further directs that any newly annexed property into the Town be included within the jurisdictional boundaries of the District pursuant to A.R.S. § 48-262(M).

FURTHER RESOLVED that the Town Manager and staff are hereby authorized to take all action necessary to implement the directives set forth above, including, if necessary, the circulation of joint annexation petitions from time to time.

PASSED AND ADOPTED this _____ day of _____, 2020, by the Mayor and Council of the Town of Camp Verde, Arizona.

Charles German, Mayor

ATTEST:

Cindy Pemberton, Town Clerk

APPROVED AS TO FORM:

_____, Town Attorney

DRAFT